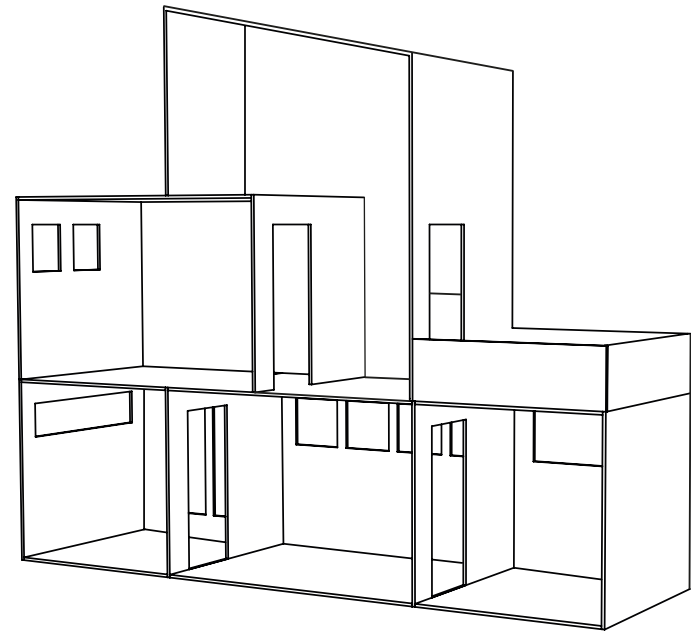
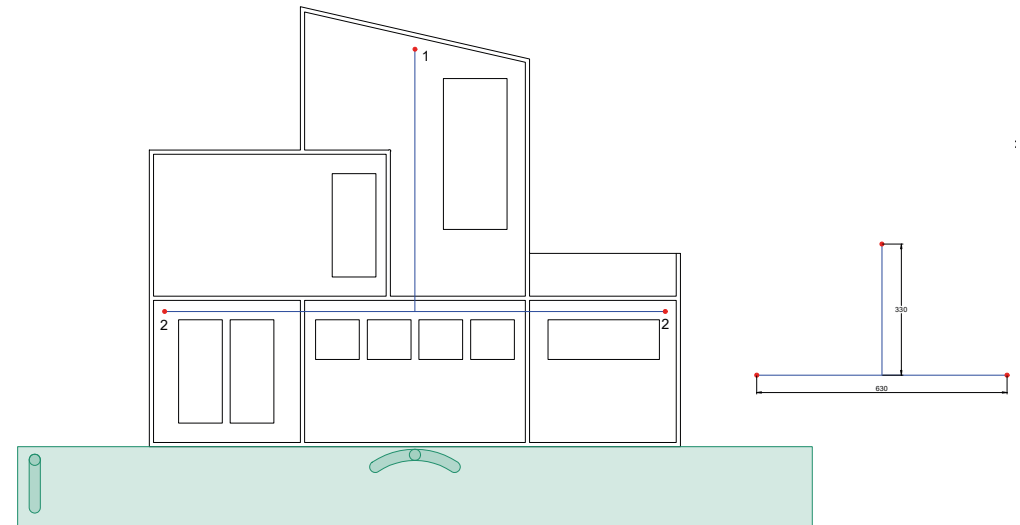


MINIATURE FUNKIS HOUSE

MOUNTING GUIDE

fermliving.com





Use this miniature funkis house as a standing decorative item or hang it on the wall. This product is not CE approved and is not designed as a toy.

WARNING: NEVER HANG IN, CLIMB, STAND- OR SIT ON THE MINIATURE HOUSE, DUE TO THE DELICATE STRUCTURE MADE IN NATURAL PLYWOOD.

1. If mounted on the wall, please carefully drill holes in the backside of the house according to sketch.
2. Make sure to drill min. 15 mm from the edges.
3. Place the house on the wall and mark Hole 1.
4. Drill the hole and hang the house. Put the spirit level under the house and then mark hole 2 and 3.
5. Remove the house and drill the last two holes. Mount the house with washers to ensure slight distance to the wall.

Screws, rawl plugs and washers are not included since different walls requires different tools and parts. Please contact your local hardware store for proper advise. Max weight 3 kg.